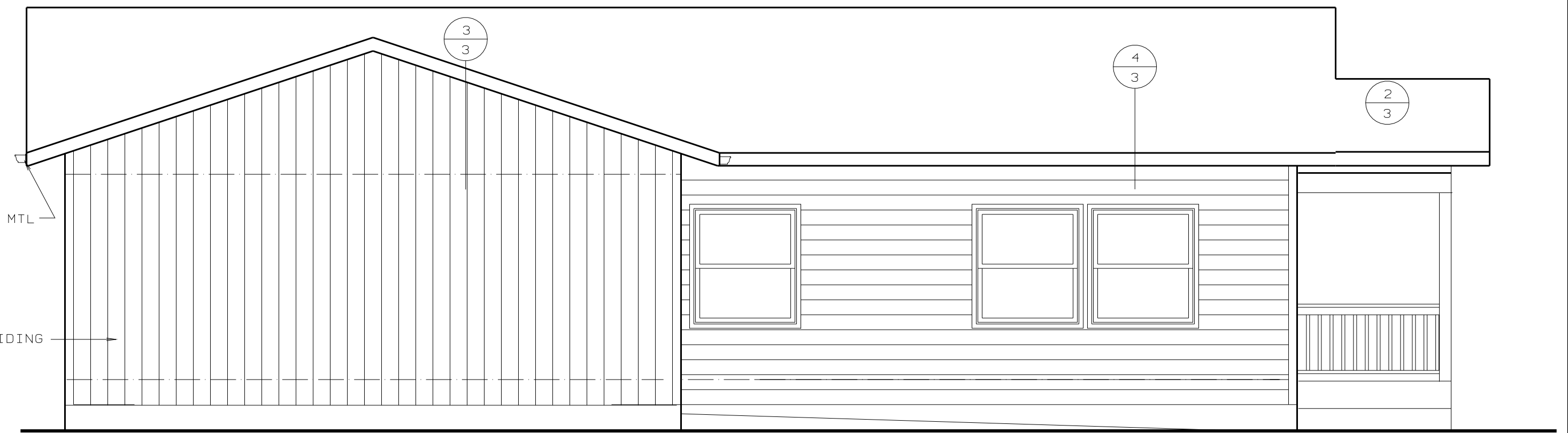


LEFT ELEVATION

1/4"=1'-0"



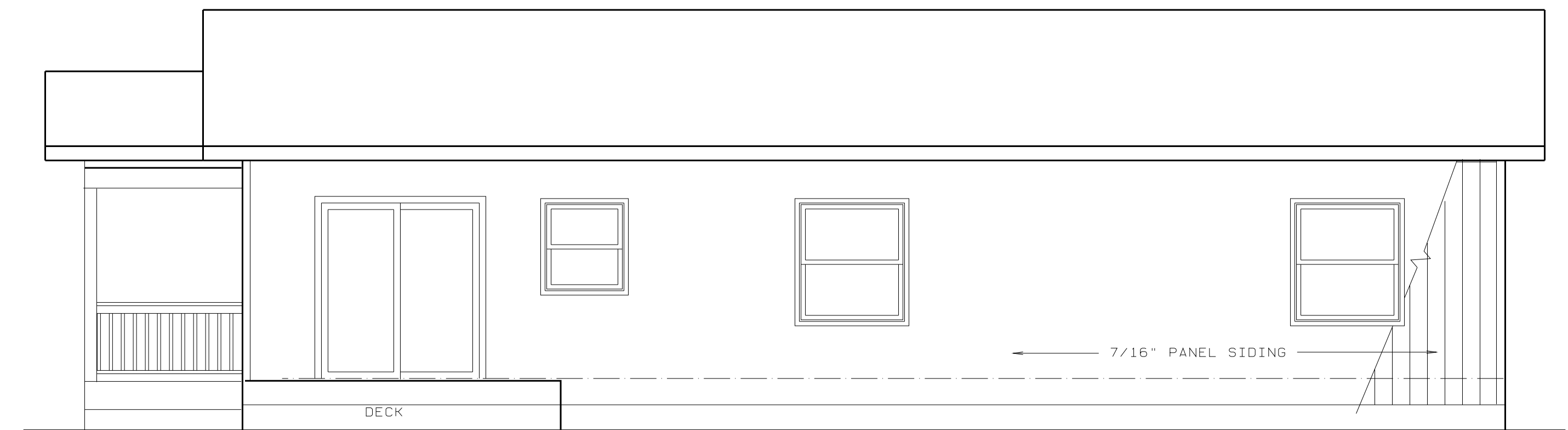
REAR ELEVATION

1/4"=1'-0"



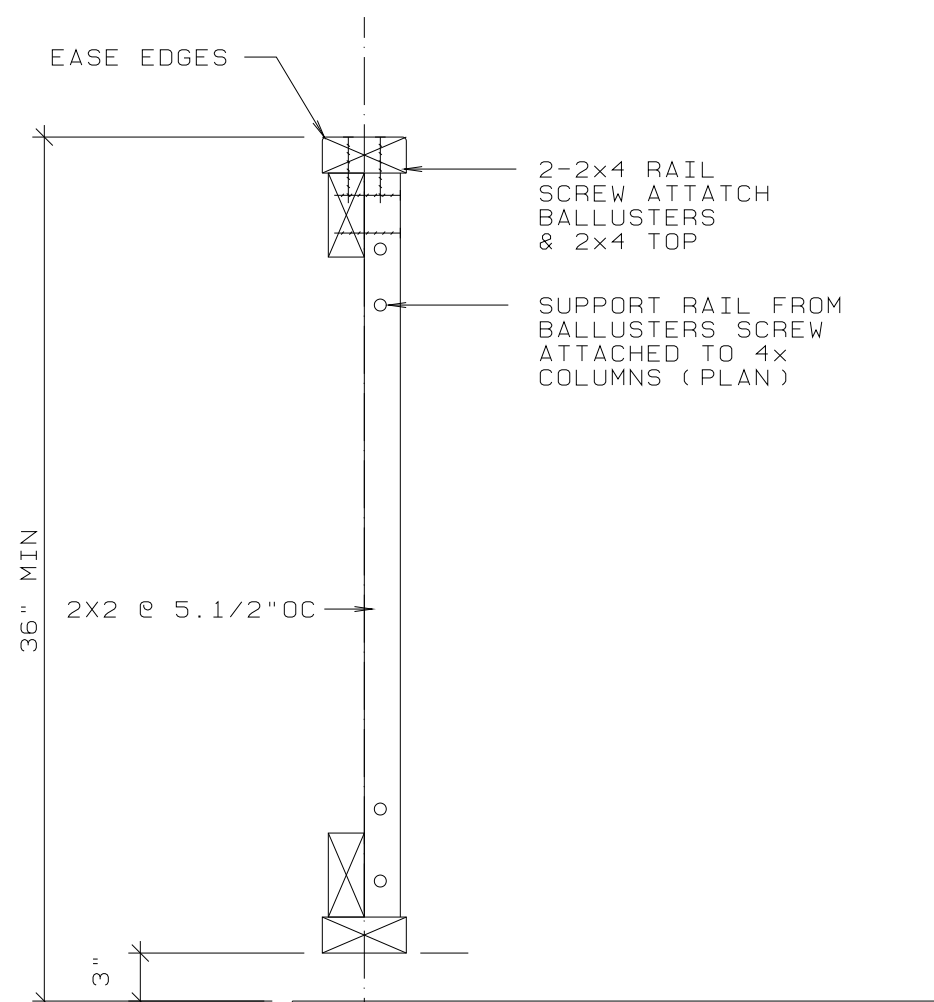
FRONT ELEVATION

1/4"=1'-0"



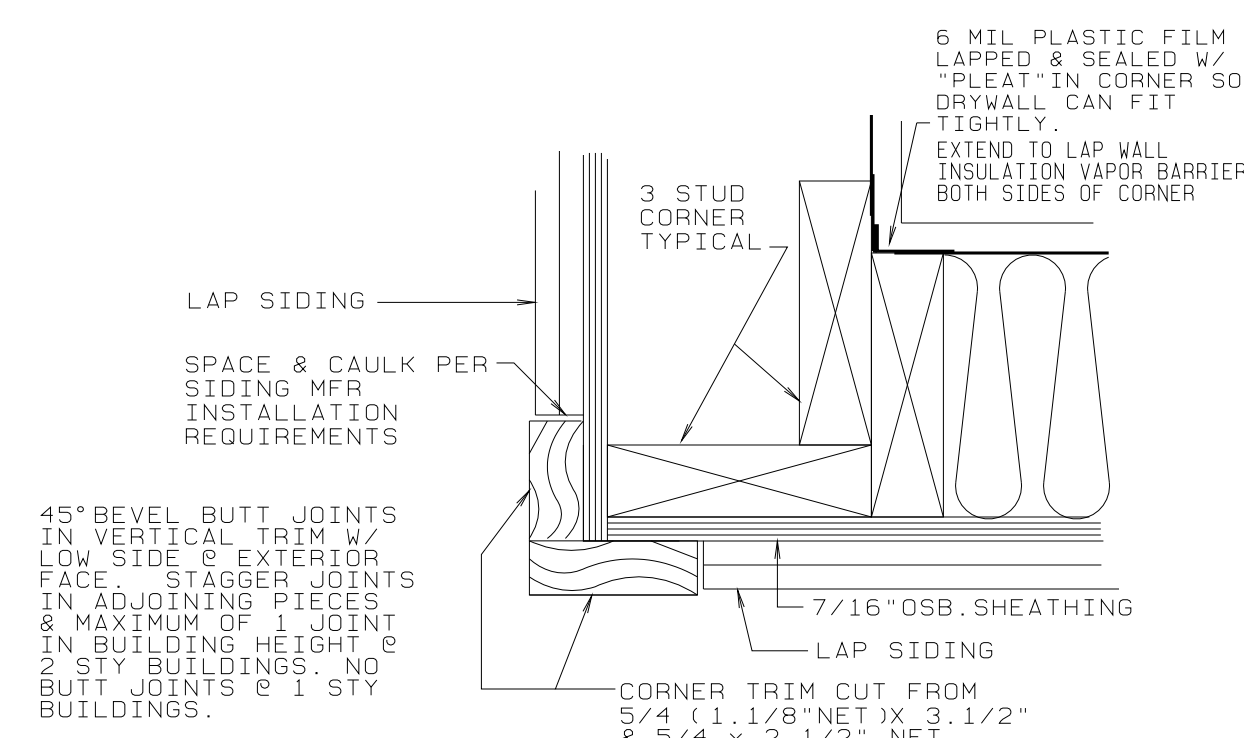
RIGHT ELEVATION

1/4"=1'-0"



1 TYPICAL RAIL DETAIL

3"=1'-0"



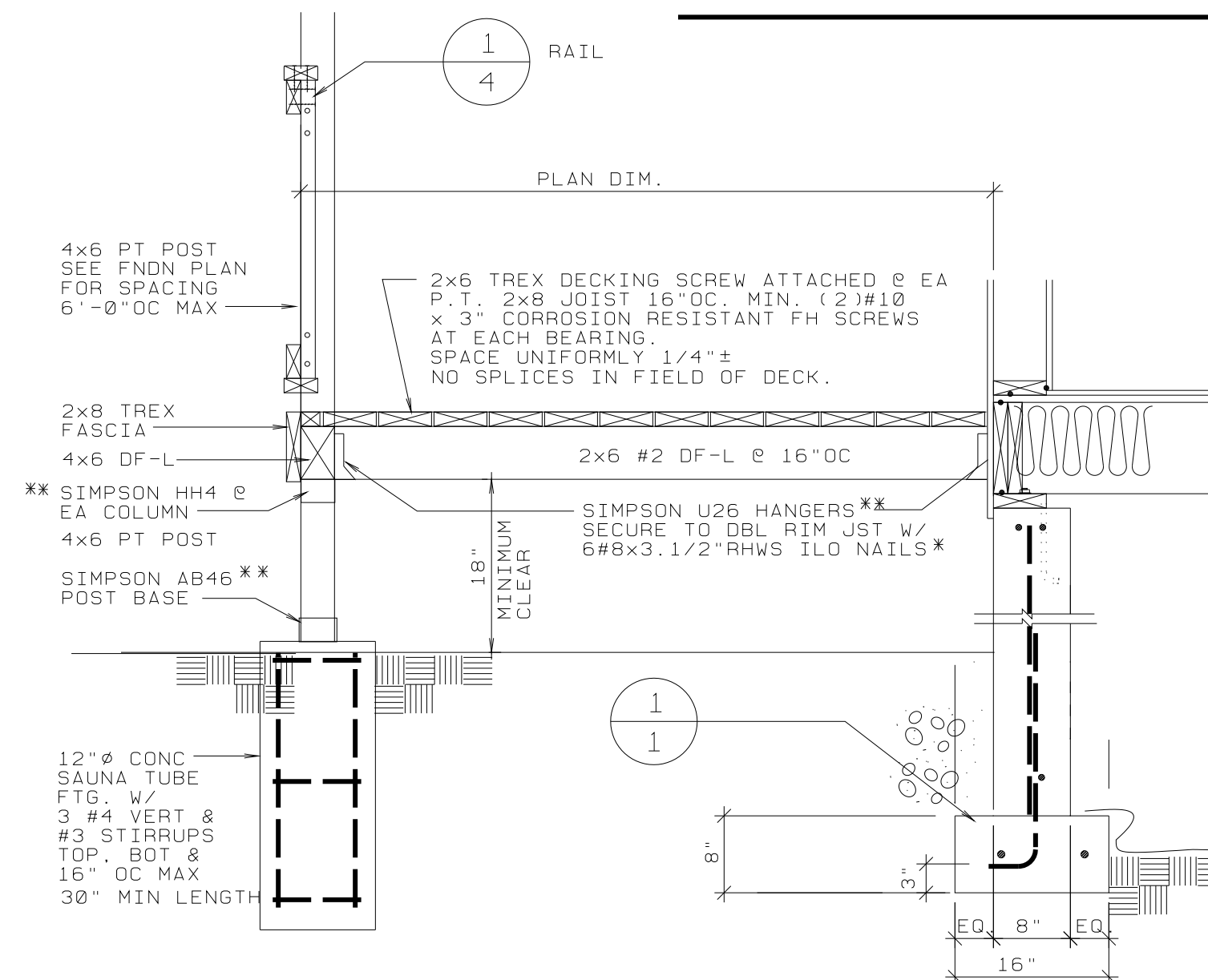
2 TYPICAL EXT. CORNER

3"=1'-0"



3 INTERIOR CORNER SIDING DETAIL.

3"=1'-0"

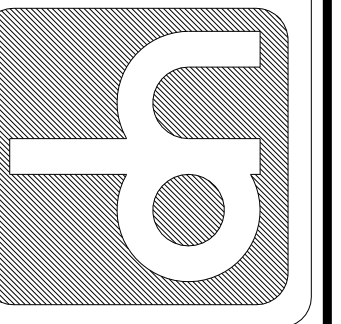


4 ALTERNATE PORCH FOUNDATION DETAIL

NO SCALE

* SCREWS HOT-DIPPED GALVANIZED OR STAINLESS
 ** HANGERS SHALL HAVE G185 GALVANIZED COATING "Z-MAX" OR SHALL BE STAINLESS STEEL.

DALLAS W. HORN, ARCHITECT
 MEMBER - AMERICAN INSTITUTE OF ARCHITECTS
 840 SE ROSE - ROSEBURG, OR 97470
 PHONE: (541) 672-6668
 dwh@rio.com



REGISTERED ARCHITECT
 DALLAS W. HORN
 2011-2016
 DOUGLAS COUNTY, OREGON

SELF HELP HOUSING - 4 BEDROOM DWELLING LA-1

DOUGLAS COUNTY, OREGON
 OWNER-DEVELOPER - UMPQUA COMMUNITY DEVELOPMENT CORP.

EXTERIOR ELEVATIONS

PROJECT NO. A9003
 LA04
 DATE 1/21/09
 REVISIONS

DRAWING SET NO.

SHEET NO
 4
 OF 8