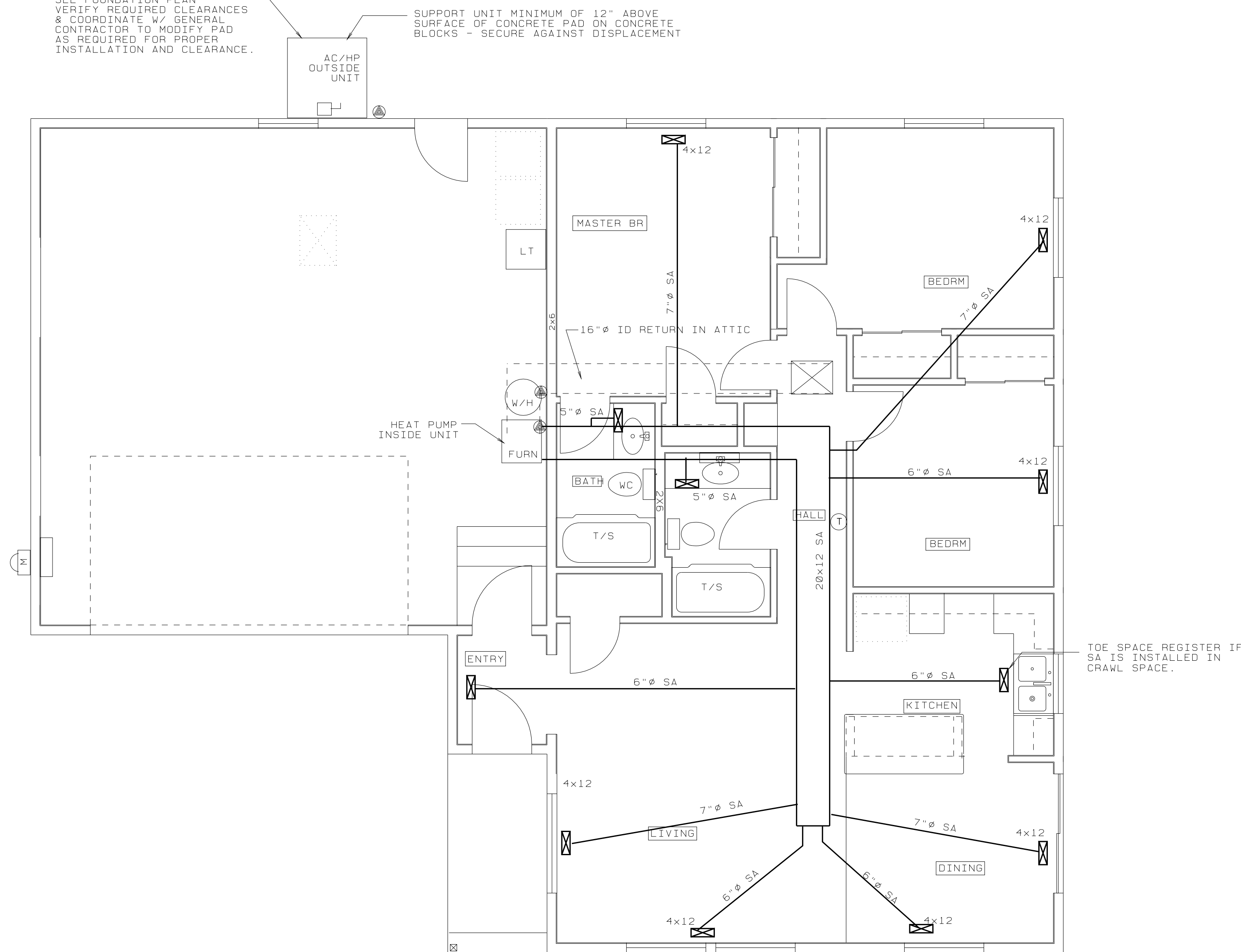


CONCRETE EQUIPMENT PAD
SEE FOUNDATION PLAN
VERIFY REQUIRED CLEARANCES
& COORDINATE W/ GENERAL
CONTRACTOR TO MODIFY PAD
AS REQUIRED FOR PROPER
INSTALLATION AND CLEARANCE.

SUPPORT UNIT MINIMUM OF 12" ABOVE
SURFACE OF CONCRETE PAD ON CONCRETE
BLOCKS - SECURE AGAINST DISPLACEMENT



HVAC EQUIPMENT SCHEDULE

GENERAL:
ALL SYSTEM COMPONENTS SHALL BE BY ONE MANUFACTURER & MATCHED FOR
SIZE & PERFORMANCE. SYSTEM SHALL INCLUDE ALL ELECTRICAL CONNECTIONS
SWITCHES, REFRIGERANT LINES, FILTERS, GRILLS, REGISTERS, FITTINGS
& INCIDENTALS REQUIRED FOR PROPER SYSTEM OPERATION. INSTALLATION OF
ALL EQUIPMENT AND ACCESSORIES SHALL BE IN ACCORDANCE WITH MFR'S
RECOMMENDATIONS.

HVAC SYSTEM IS A DESIGN-BUILD CONTRACT AND SYSTEM SHOWN IS SCHEMATIC ONLY
TO SHOW CAPACITIES AND SCOPE OF WORK. OWNER/CONTRACTOR MAY ELECT TO INSTALL SUPPLY AIR
SUPPLY DUCTWORK EITHER IN ATTIC OR IN CRAWL SPACE. SUBJECT TO MAINTAINING CODE
CLEARANCES. COORDINATE FOUNDATION WALL PENETRATIONS IF INSTALLATION IS TO BE
THROUGH CRAWL SPACE.

HEAT PUMP:
NOMINAL 2 1/2 TON SPLIT SYSTEM WITH:
S.E.E.R. OF 13.00 OR BETTER PER D.O.E. TEST PROCEDURE
HSPF OF 8.0 BTU/WATT-HR OR BETTER PER D.O.E. TEST PROCEDURE
10.00 KW SUPPLEMENTARY ELECTRIC HEAT.

MANUFACTURER & MODEL: LENNOX, TRANE, GE, RUUD, COLMAN, SONY, OR APPROVED.

REGISTERS & GRILLS:
FLOOR REGISTERS: AIRMATE SERIES 300 OR APPROVED; BROWN ENAMEL
WITH AUTOMATIC NIGHT SET-BACK; ON, OFF, FAN, AUTO AND HEAT-COOL
RETURN AIR FILTER GRILL: AIRMATE SERIES 170 FF OR APPROVED
WHITE ENAMEL FINISHED STEEL FOR 1" FILTER.

THERMOSTAT:
HONEYWELL, WHITE-ROGERS, OR APPROVED; ELECTRONIC PROGRAMMABLE
WITH AUTOMATIC NIGHT SET-BACK; ON, OFF, FAN, AUTO AND HEAT-COOL
SWITCHES. AUTO CHANGE-OVER FEATURE OPTIONAL WITH MINIMUM 10 DEG.F.
DEADBAND BETWEEN HEATING AND COOLING SETTINGS.

DUCTWORK
REFER TO SPECIFICATIONS
MEET 2005 OREGON RESIDENTIAL SPECIALTY CODE FOR DUCT INSULATION
GARAGE WALL PENETRATIONS, AND RELATED REQUIREMENTS.
DUCT SIZES SHOWN ARE MINIMUM. INCREASE 1" IN DIAMETER FOR FLEX DUCTS.
INCREASE DUCT SIZES AS REQUIRED BY STATIC PRESSURE CAPACITY OF FAN COIL.

ALL DUCTWORK IN GARAGE AND CRAWL SPACE SHALL BE INSULATED METAL AS SPECIFIED
PERFORMED FIBERGLASS OR FIBERGLASS DUCTBOARD NOT ALLOWED IN CRAWL SPACE.

ALL DUCTS EXPOSED IN GARAGE SHALL BE INSIDE INSULATED METAL, RIGID PREFORMED FIBERGLASS OR FIBERGLASS
DUCTBOARD SHALL BE LIMITED TO ATTIC SPACES. UNLESS OTHERWISE APPROVED "FLEX" DUCT SHALL BE LIMITED TO
48" LENGTHS FOR TRANSITIONS AND CONNECTIONS TO REGISTERS AND GRILLS.

ELECTRIC HEATERS & EXHAUST FANS
SEE FLOOR PLANS FOR ELECTRIC HEATERS IN BATHROOMS.
SEE FLOOR PLAN FOR EXHAUST FANS.

HVAC SYSTEM ALTERNATE BID

DELETE HEAT PUMP SYSTEM SPECIFIED ABOVE AND SUBSTITUTE GAS/ELECTRIC SYSTEM SPECIFIED BELOW
HVAC SYSTEM SHALL BE GAS HEATING WITH ELECTRIC AIR CONDITIONING INSTEAD OF HEAT-PUMP SYSTEM
SHOWN IN THE DRAWINGS AND SPECIFIED ABOVE.

FURNACE/FANCOIL AND COMPRESSOR LOCATIONS SHALL BE AS SHOWN IN THE DRAWINGS.

FURNACE CAPACITY:
50,000 BTUH MINIMUM
PROVIDE COST FOR 80% MINIMUM EFFICIENCY FURNACE AND ALTERNATE COST FOR MINIMUM 90% EFFICIENCY FURNACE.
OWNER INTENDS TO INVESTIGATE POSSIBILITY OF OBTAINING ENERGY CREDITS FOR MORE EFFICIENT UNITS,
AND NEEDS COST DIFFERENCE TO MAKE FINAL DETERMINATION.

AIR CONDITIONING:
2-1/2 TON (30,000 BTUH) CAPACITY COMPRESSOR AND MATCHED INDOOR COILS.
13.0 MINIMUM SEER

THERMOSTAT SHALL BE DIGITAL PROGRAMMABLE WITH AUTO CHANGE OVER, AND NIGHT SET-BACK FEATURES.
PROVIDE CURBS, CONDENSATE DRAINS, PROTECTIVE BOLLARDS, COMBUSTION AIR DUCTING, VENTS, AND
OTHER INCIDENTALS AS REQUIRED FOR COMPLETE AND OPERABLE INSTALLATION IN CONFORMANCE WITH APPLICABLE CODES.

HVAC PLAN

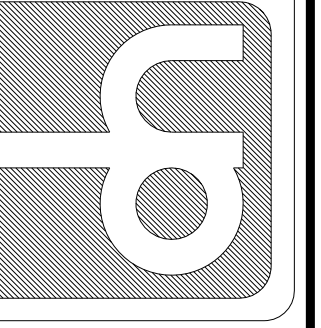
3 BEDROOM

1122 SF

A5009-1122SF-3BR-LA

1/4" = 1'-0"

DALLAS W. HORN, ARCHITECT
MEMBER - AMERICAN INSTITUTE OF ARCHITECTS
840 SE ROSE - ROSEBURG, OR 97470
PHONE: (541) 672-5658
dwh@p10.com



REGISTERED ARCHITECT • NORTHERN
DALLAS W. HORN
DOUGLAS COUNTY, OREGON
ROSEBURG, OREGON

SELF HELP HOUSING - 3 BEDROOM DWELLING LA-1
DOUGLAS COUNTY, OREGON
OWNER-DEVELOPER - UMPQUA COMMUNITY DEVELOPMENT CORP.

HVAC PLAN

PROJECT NO. A9003
LABS
DATE 1/21/09
REVISIONS

DRAWING SET NO.

SHEET NO

6
OF 8