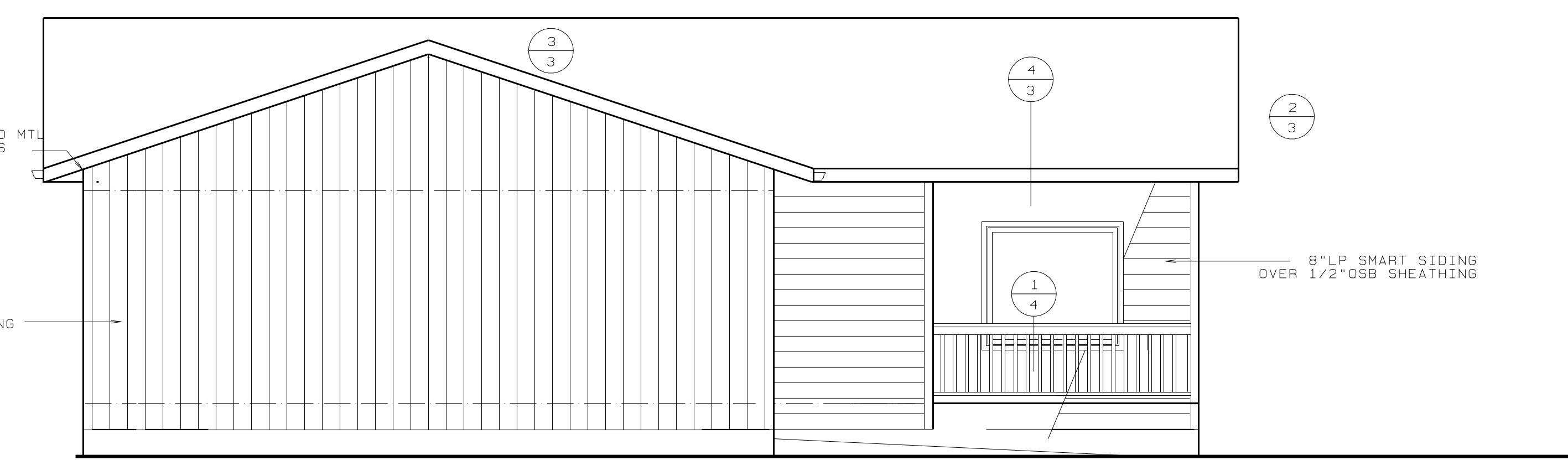
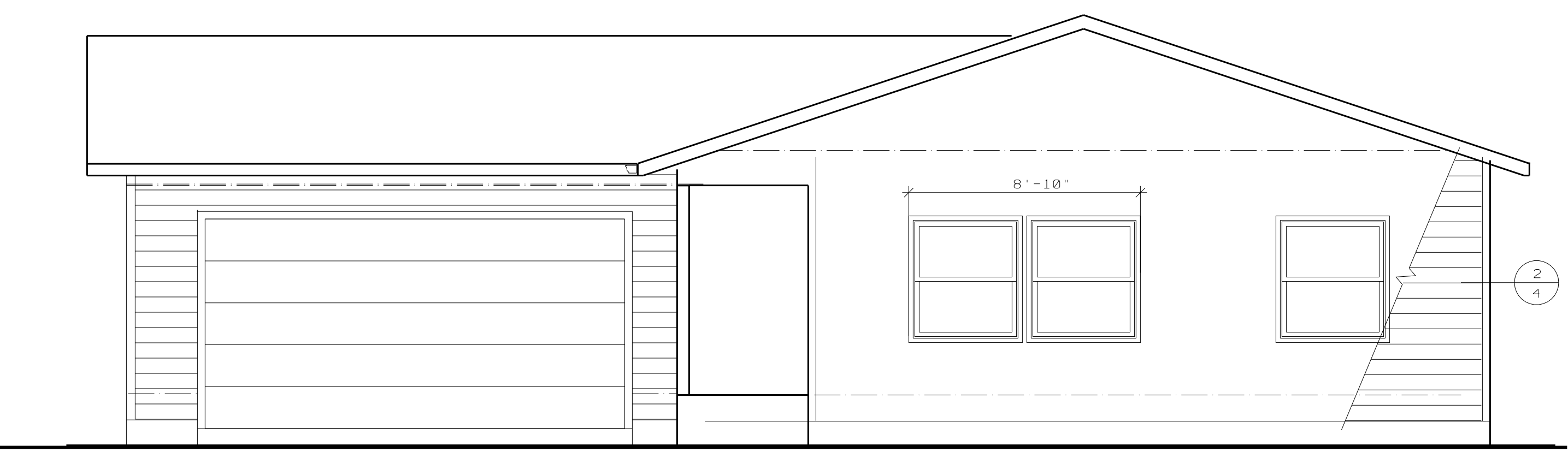


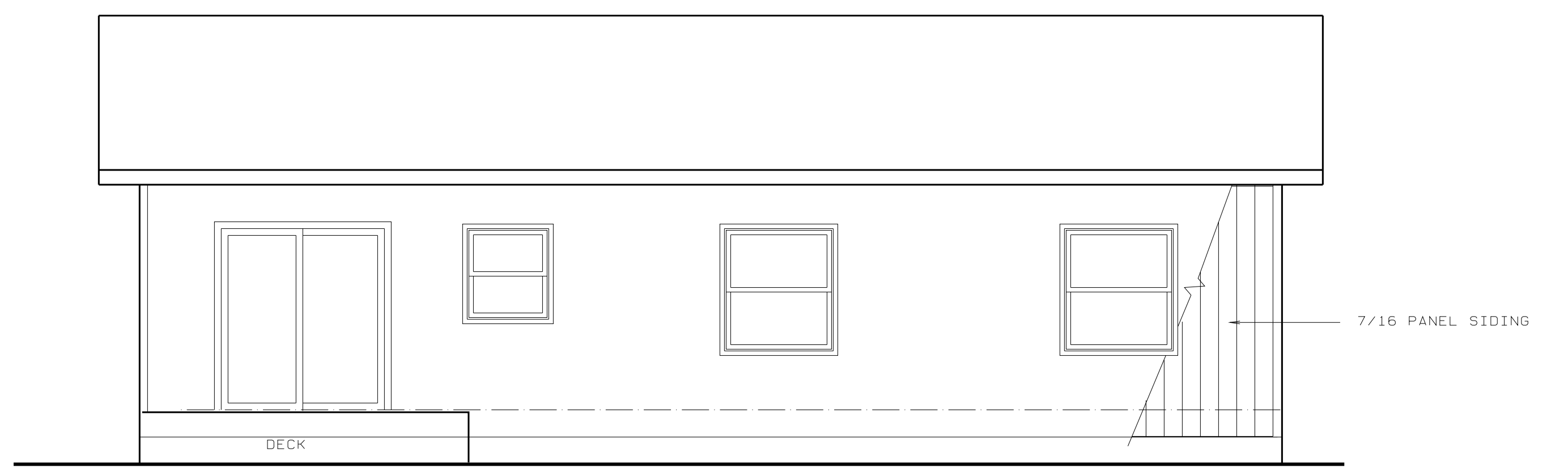
LEFT ELEVATION
1/4"=1'-0"



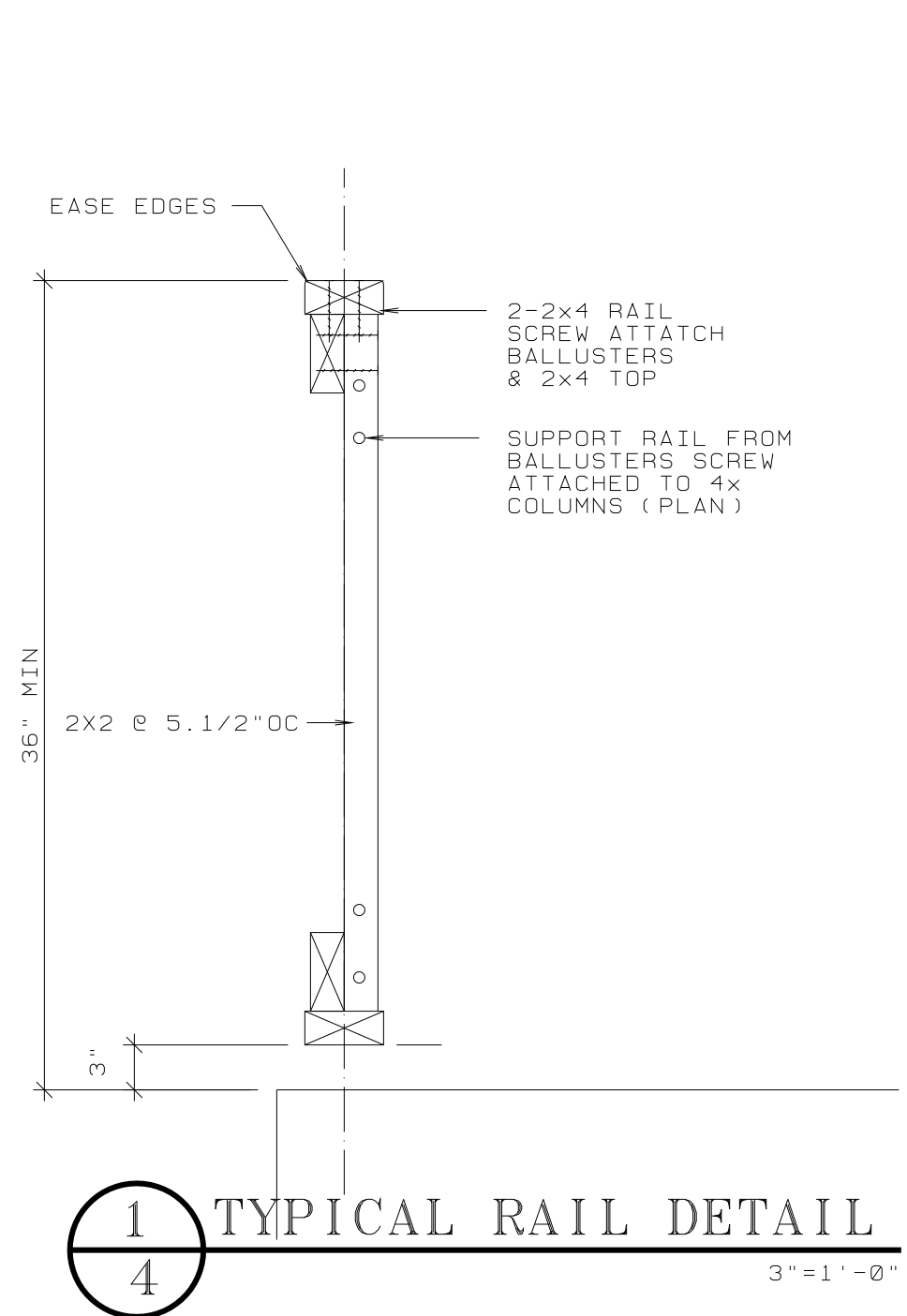
FRONT ELEVATION
1/4"=1'-0"



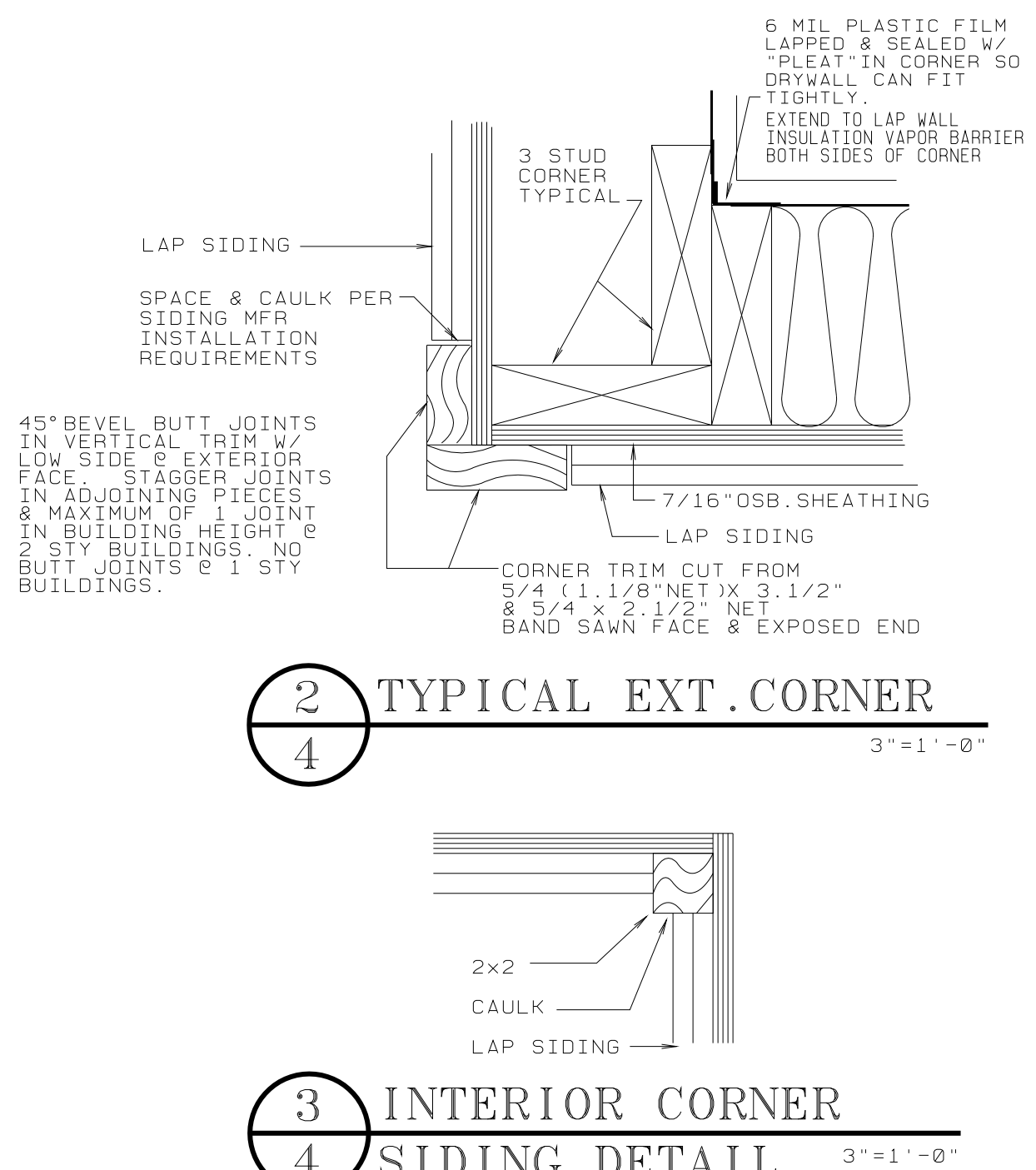
RIGHT ELEVATION
1/4"=1'-0"



REAR ELEVATION
1/4"=1'-0"

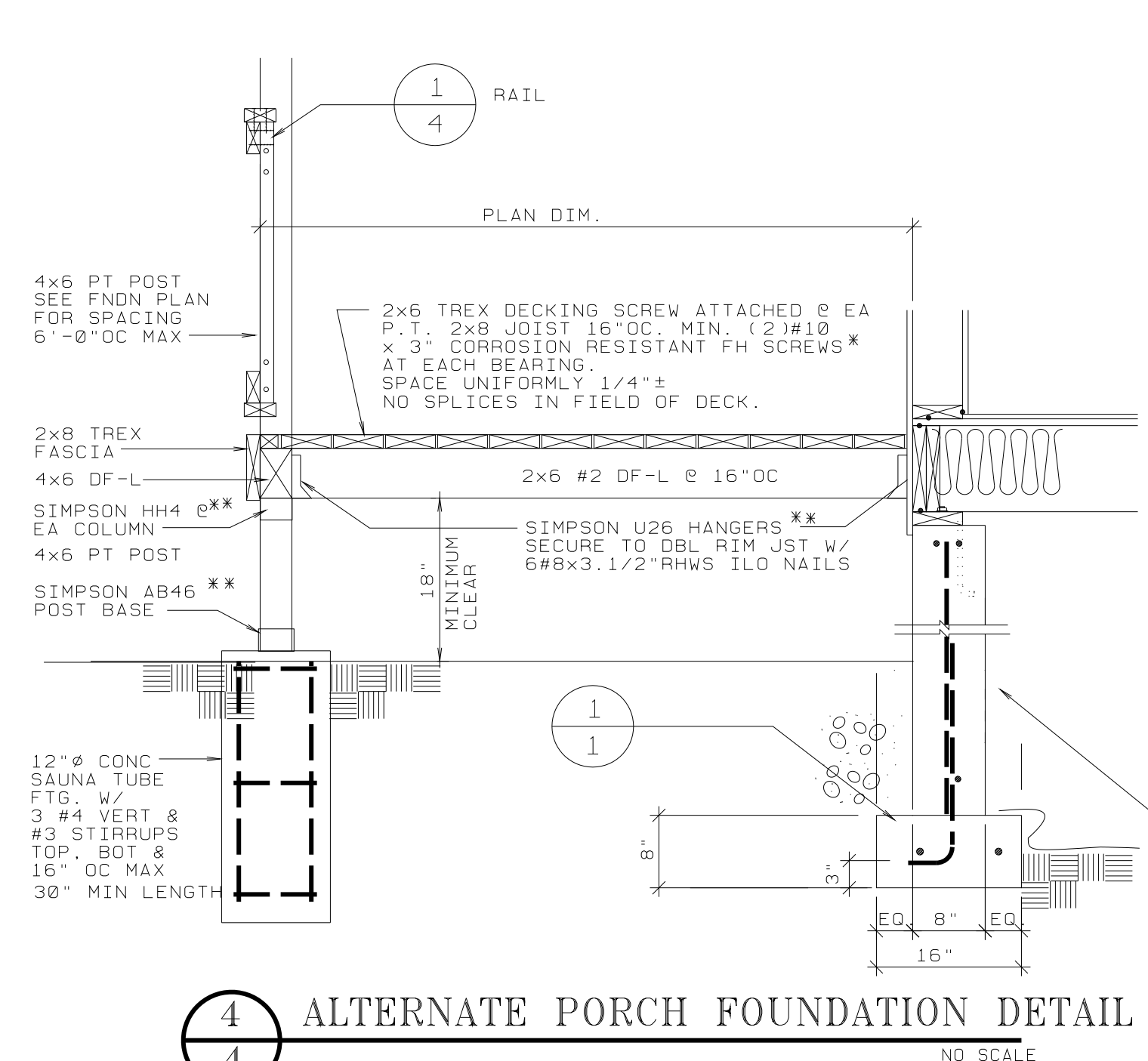


1 TYPICAL RAIL DETAIL
3"=1'-0"

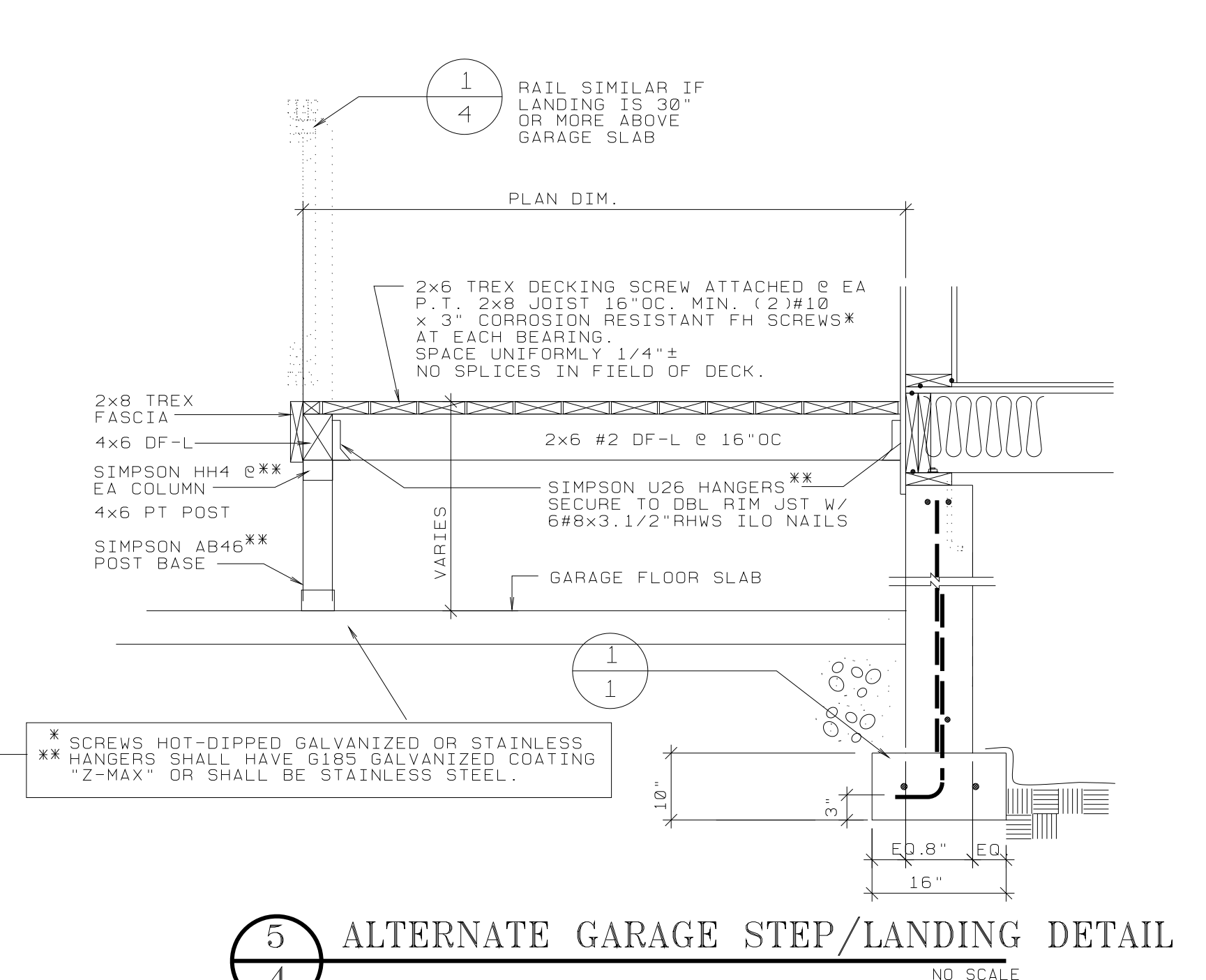


2 TYPICAL EXT. CORNER
3"=1'-0"

3 INTERIOR CORNER SIDING DETAIL
3"=1'-0"

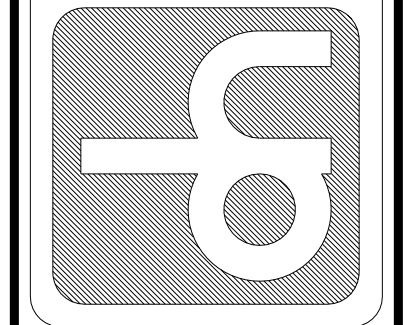


4 ALTERNATE PORCH FOUNDATION DETAIL
NO SCALE



5 ALTERNATE GARAGE STEP/LANDING DETAIL
NO SCALE

DALLAS W. HORN, ARCHITECT
MEMBER - AMERICAN INSTITUTE OF ARCHITECTS
840 SE ROSE - ROSEBURG, OR 97470
PHONE: (541) 672-5658
dwh@r10.com



REGISTERED ARCHITECT - NOBODI OF
DALLAS HORN
ROSEBURG, OREGON

SELF HELP HOUSING - 3 BEDROOM DWELLING LA-1
DOUGLAS COUNTY, OREGON
OWNER-DEVELOPER - UMPQUA COMMUNITY DEVELOPMENT CORP.

EXTERIOR ELEVATIONS

PROJECT NO. A9003
LA04
DATE 1/21/09
REVISIONS
DRAWING SET NO.
SHEET NO
4
OF 8