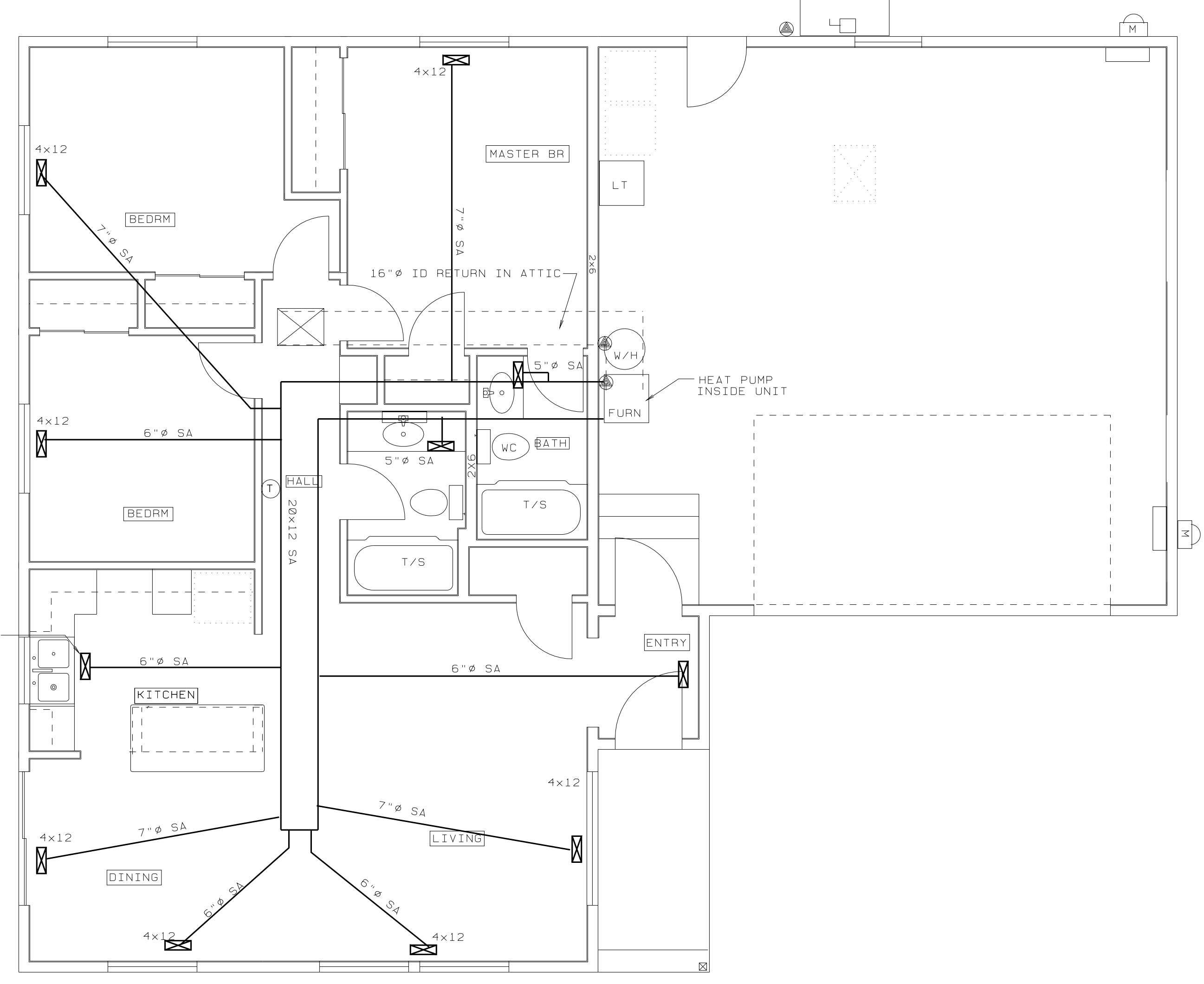


SUPPORT UNIT MINIMUM OF 12" ABOVE SURFACE OF CONCRETE PAD ON CONCRETE BLOCKS - SECURE AGAINST DISPLACEMENT

CONCRETE EQUIPMENT PAD SEE FOUNDATION PLAN. VERIFY REQUIRED CLEARANCES & COORDINATE W/ GENERAL CONTRACTOR TO MODIFY PAD AS REQUIRED FOR PROPER INSTALLATION AND CLEARANCE.



TOE SPACE REGISTER IF SA IS INSTALLED IN CRAWL SPACE.

**HVAC EQUIPMENT SCHEDULE**

**GENERAL:**  
 ALL SYSTEM COMPONENTS SHALL BE BY ONE MANUFACTURER & MATCHED FOR SIZE & PERFORMANCE. SYSTEM SHALL INCLUDE ALL ELECTRICAL CONNECTIONS SWITCHES, REFRIGERANT LINES, FILTERS, GRILLS, REGISTERS, FITTINGS & INCIDENTALS REQUIRED FOR PROPER SYSTEM OPERATION. INSTALLATION OF ALL EQUIPMENT AND ACCESSORIES SHALL BE IN ACCORDANCE WITH MFR'S. RECOMMENDATIONS.

HVAC SYSTEM IS A DESIGN-BUILD CONTRACT AND SYSTEM SHOWN IS SCHEMATIC ONLY TO SHOW CAPACITIES AND SCOPE OF WORK. OWNER/CONTRACTOR MAY ELECT TO INSTALL SUPPLY AIR SUPPLY DUCTWORK EITHER IN ATTIC OR IN CRAWL SPACE. SUBJECT TO MAINTAINING CODE CLEARANCES. COORDINATE FOUNDATION WALL PENETRATIONS IF INSTALLATION IS TO BE THROUGH CRAWL SPACE.

**HEAT PUMP:**  
 NOMINAL 2 1/2 TON SPLIT SYSTEM WITH:  
 S.E.E.R OF 13.00 OR BETTER PER D.O.E. TEST PROCEDURE  
 HSPF OF 8.0 BTU/WATT-HR OR BETTER PER D.O.E. TEST PROCEDURE  
 10.00 KW SUPPLEMENTARY ELECTRIC HEAT.

MANUFACTURER & MODEL: LENNOX, TRANE, GE, RUUD, COLMAN, SONY, OR APPROVED.

**REGISTERS & GRILLS:**  
 FLOOR REGISTERS: AIRMATE SERIES 300 OR APPROVED; BROWN ENAMEL FINISHED STEEL WITH MULTI-SLIDE DAMPERS  
 RETURN AIR FILTER GRILL: AIRMATE SERIES 170 FF OR APPROVED WHITE ENAMEL FINISHED STEEL FOR 1" FILTER.

**THERMOSTAT:**  
 HONEYWELL, WHITE-ROGERS, OR APPROVED; ELECTRONIC PROGRAMMABLE WITH AUTOMATIC NIGHT SET-BACK; ON, OFF, FAN, AUTO AND HEAT-COOL SWITCHES. AUTO CHANGE-OVER FEATURE OPTIONAL WITH MINIMUM 10 DEG.F. DEADBAND BETWEEN HEATING AND COOLING SETTINGS.

**DUCTWORK**  
 REFER TO SPECIFICATIONS  
 MEET 2005 OREGON RESIDENTIAL SPECIALTY CODE FOR DUCT INSULATION GARAGE WALL PENETRATIONS, AND RELATED REQUIREMENTS.  
 DUCT SIZES SHOWN ARE MINIMUM. INCREASE 1" IN DIAMETER FOR FLEX DUCTS. INCREASE DUCT SIZES AS REQUIRED BY STATIC PRESSURE CAPACITY OF FAN COIL.

ALL DUCTWORK IN GARAGE AND CRAWL SPACE SHALL BE INSULATED METAL AS SPECIFIED PERFORMED FIBERGLASS OR FIBERGLASS DUCTBOARD NOT ALLOWED IN CRAWL SPACE.

ALL DUCTS EXPOSED IN GARAGE SHALL BE INSIDE INSULATED METAL. RIGID PREFORMED FIBERGLASS OR FIBERGLASS DUCTBOARD SHALL BE LIMITED TO ATTIC SPACES. UNLESS OTHERWISE APPROVED "FLEX" DUCT SHALL BE LIMITED TO 48" LENGTHS FOR TRANSITIONS AND CONNECTIONS TO REGISTERS AND GRILLS.

**ELECTRIC HEATERS & EXHAUST FANS**  
 SEE FLOOR PLANS FOR ELECTRIC HEATERS IN BATHROOMS.  
 SEE FLOOR PLAN FOR EXHAUST FANS.

**HVAC SYSTEM ALTERNATE BID**

DELETE HEAT PUMP SYSTEM SPECIFIED ABOVE AND SUBSTITUTE GAS/ELECTRIC SYSTEM SPECIFIED BELOW  
 HVAC SYSTEM SHALL BE GAS HEATING WITH ELECTRIC AIR CONDITIONING INSTEAD OF HEAT-PUMP SYSTEM SHOWN IN THE DRAWINGS AND SPECIFIED ABOVE.

FURNACE/FANCOIL AND COMPRESSOR LOCATIONS SHALL BE AS SHOWN IN THE DRAWINGS.

**FURNACE CAPACITY:**  
 50,000 BTUH MINIMUM  
 PROVIDE COST FOR 80% MINIMUM EFFICIENCY FURNACE AND ALTERNATE COST FOR MINIMUM 90% EFFICIENCY FURNACE. OWNER INTENDS TO INVESTIGATE POSSIBILITY OF OBTAINING ENERGY CREDITS FOR MORE EFFICIENT UNITS. AND NEEDS COST DIFFERENCE TO MAKE FINAL DETERMINATION.

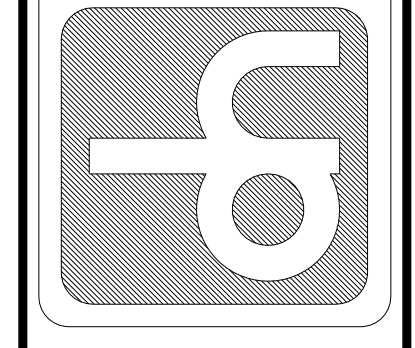
**AIR CONDITIONING:**  
 2-1/2 TON (30,000 BTUH) CAPACITY COMPRESSOR AND MATCHED INDOOR COILS.  
 13.0 MINIMUM SEER

THERMOSTAT SHALL BE DIGITAL PROGRAMMABLE WITH AUTO CHANGE OVER, AND NIGHT SET-BACK FEATURES. PROVIDE CURBS, CONDENSATE DRAINS, PROTECTIVE BOLLARDS, COMBUSTION AIR DUCTING, VENTS, AND OTHER INCIDENTALS AS REQUIRED FOR COMPLETE AND OPERABLE INSTALLATION IN CONFORMANCE WITH APPLICABLE CODES.

HVAC PLAN                      3 BEDROOM                      1122 SF

A6009-1122SF-3BR-RA                      1/4" = 1'-0"

**DALLAS W. HORN, ARCHITECT**  
 MEMBER - AMERICAN INSTITUTE OF ARCHITECTS  
 840 SE ROSE - ROSEBURG, OR 97470  
 PHONE: (541) 672-5658  
 dwh@r10.com



REGISTERED ARCHITECT  
 DALLAS HORN  
 ROSEBURG, OREGON  
 REGISTERED ARCHITECT  
 OREGON

SELF HELP HOUSING - 3 BEDROOM DWELLING RA-1  
 DOUGLAS COUNTY, OREGON  
 OWNER-DEVELOPER - UMPQUA COMMUNITY DEVELOPMENT CORP.

HVAC PLAN

PROJECT NO. A9003  
 DATE 1/21/09  
 REVISIONS  
 DRAWING SET NO. \_\_\_\_\_  
 SHEET NO  
 6  
 OF 8